



BETHANY COMMONS ASSISTED LIVING

# Welcome to Carondelet Village

For a setting that offers freedom combined with the comfort of knowing supportive services are available, choose The Commons assisted living.

Shape your daily life as you desire with the support of Liberty Personally Designed Living™, an innovative approach to personal care and assistance. Nicely appointed common areas are well-suited for group or casual gatherings, while social and recreational opportunities create a sense of community.

---

## Included Amenities

- Choice of two daily meals
- Escorts to meals and activities for first 5 days
- Flexible dining hours
- Weekly light housekeeping and linen change
- Pastoral care
- Wings® wellness intellectually stimulating programs, spiritual care services, group fitness classes, fitness center with pool, volunteer opportunities
- Urgent call system
- 24 hour on-site Resident Assistant staffing
- Designated complimentary transportation to shopping and outings
- Controlled entrance
- Utilities (heat, electric, central air conditioning, water, sewer and trash)
- Basic cable television service
- Open public Wi-Fi
- Basic internet service support
- Telephone service
- Laundry facilities
- Priority access to other Presbyterian Homes & Services living and care options based on availability
- Smoke-free community
- Access to Carondelet Circle amenities



## Other Conveniences

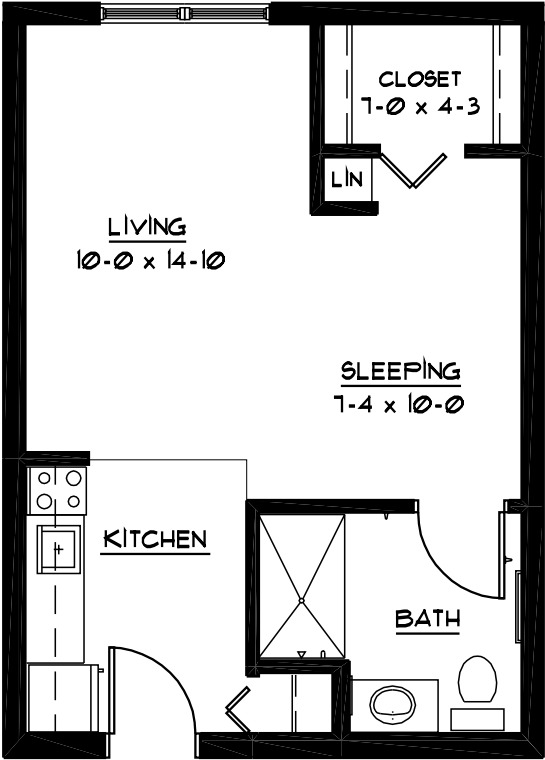
Additional fees may apply

- Coordination of specialized nursing and therapy visits
- Physical, speech and occupational therapy
- Consulting Registered Dietician
- Diabetic program
- Assistance with arranging transportation to medical and social service appointments
- Assistance with accessing community resources and social services
- Transportation for shopping and outings
- Access to designated Physician or Nurse Practitioner for on-site services
- Additional home care and hospice services available through Optage®
- Cable television service packages
- Guest dining / Guest suite
- Second occupant, \$800 plus personal care
- Third meal option
- Outpatient therapy — physical, occupational and speech therapy

## Distinctive Details

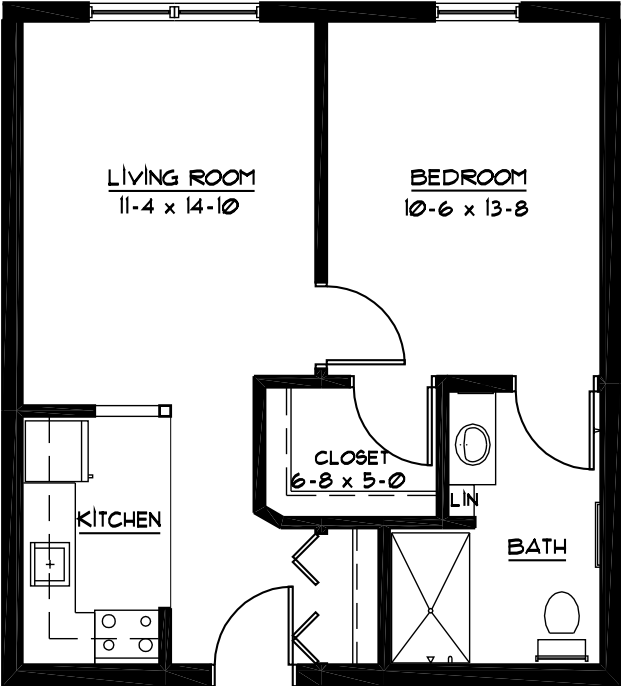
- Bright spacious floor plans
- Kitchen with appliances and maple cabinetry
- In-home laundry in some apartments
- Accessible bathroom with grab bar and roll-in shower
- Individually controlled heat and central air conditioning

# Sample Floor Plans



## CHICKADEE

Studio  
470 Sq Ft



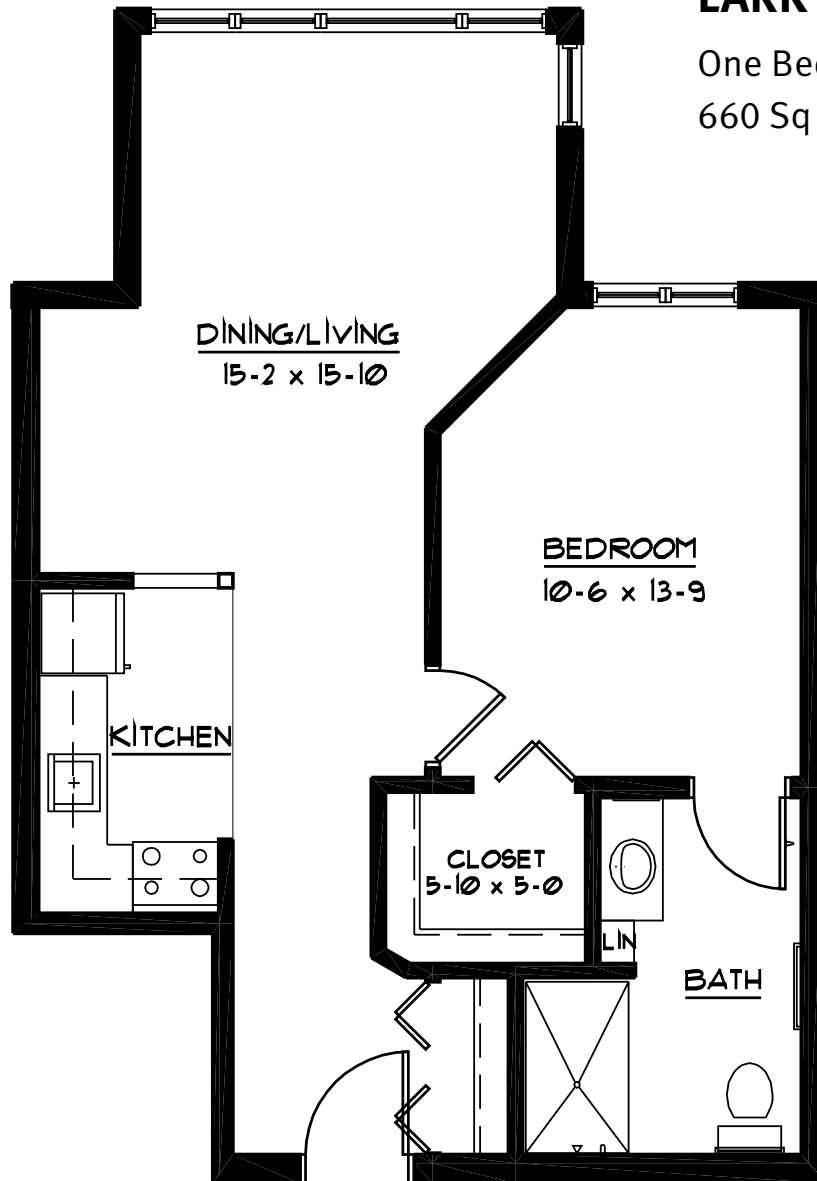
## KINGLET

One Bedroom  
600 Sq Ft

## LARK SPARROW

One Bedroom

660 Sq Ft



Bethany Commons  
651-695-5000

*Floor plans, features and amenities are subject to change without notice. Stated dimensions and square footage are approximate. To view all floor plans to go [CarondeletVillage.org](http://CarondeletVillage.org).*

At Carondelet Village, we know each individual is just that—an individual. And our services reflect that philosophy. Select from a broad range of options depending on your personal preferences. It's all based on the principle of choice. **And the choice is yours.**

### Monthly Personal Care Fee Ranges\*

Points from Assessment	Monthly Fee
0–9	\$460 <i>(required)</i>
10–101	\$920–\$2,300
102–239	\$2,760–\$4,560
240–354	\$4,770–\$5,610
355–492	\$5,820–\$6,870

\*The care fee ranges above are for estimating purposes only.

### Included in Your Personal Care Fees:

- Initial and ongoing nursing assessments
- Scheduled nursing hours and on-call nursing available for staff consultation
- Nurse liaison with health care professionals
- Nurse scheduling of lab draws
- Nurse maintaining clinical record information
- Daily reassurance check

## Monthly Rental Fee

Apartment	Sq. Ft.	Rate
Studio	430–480	\$3,960
One Bedroom	520–690	\$4,155–\$4,575
Two Bedroom	960	\$4,915
Two Bedroom/Two Bath	920–1,180	\$4,915–\$5,190

## Assisted Living Service Fees

In addition to the monthly rental fee, a monthly personal care fee for assisted living services is required based on the amount of care provided. The following steps help to assess your care needs and guide you through the residency process:

### Step 1: Reserve an apartment at Carondelet Village.

We will help you through the reservation process and provide you with essential information in preparation for the following steps.

### Step 2: Schedule an assisted living care assessment appointment.

A nurse will meet with you to complete an initial assessment and help create a personalized care plan. The assessment will include a review of your individualized needs and a recommendation of services that could be provided to meet those needs. Each service is assigned a point value and the assessment will give you an estimated total number of points.\*

To view the care assessment, scan the QR code or visit [CarondeletVillage.org](http://CarondeletVillage.org) and click on “Resident Documents.”



### Step 3: Schedule a residency agreement appointment.

We will review the residency agreement, payment information and other resources with you. Once the residency agreement process is complete, your move-in date will be confirmed.

*Pricing subject to change. Residency agreement available upon request.*



*A shared ministry of the Sisters of St. Joseph of Carondelet – St. Paul Province  
and Presbyterian Homes & Services.*

**651-695-5000**

525 Fairview Avenue South  
St. Paul, MN 55116

[CarondeletVillage.org](http://CarondeletVillage.org)

*Due to COVID-19 or other future circumstance, some features may be temporarily unavailable or offered in a different way. We anticipate features will become available in original form once it is prudent to do so. Presbyterian Homes & Services (PHS) communities comply with applicable federal civil rights laws and do not discriminate on the basis of race, color, national origin, age, disability or sex.*

[PresHomes.org](http://PresHomes.org)

Español (Spanish): Llame al 1-844-558-6125

Hmoob (Hmong): Hu rau 1-844-558-6125

Tagalog (Filipino): Tumawag sa 1-844-558-6125

Professional management by PHS Management, LLC © 2022 Presbyterian Homes and Services  
All faiths welcome. Equal housing opportunity.

## Living Options

- Senior apartments
- Assisted living apartments
- Assisted living memory care residence
- Care Center

**Carondelet**  
VILLAGE